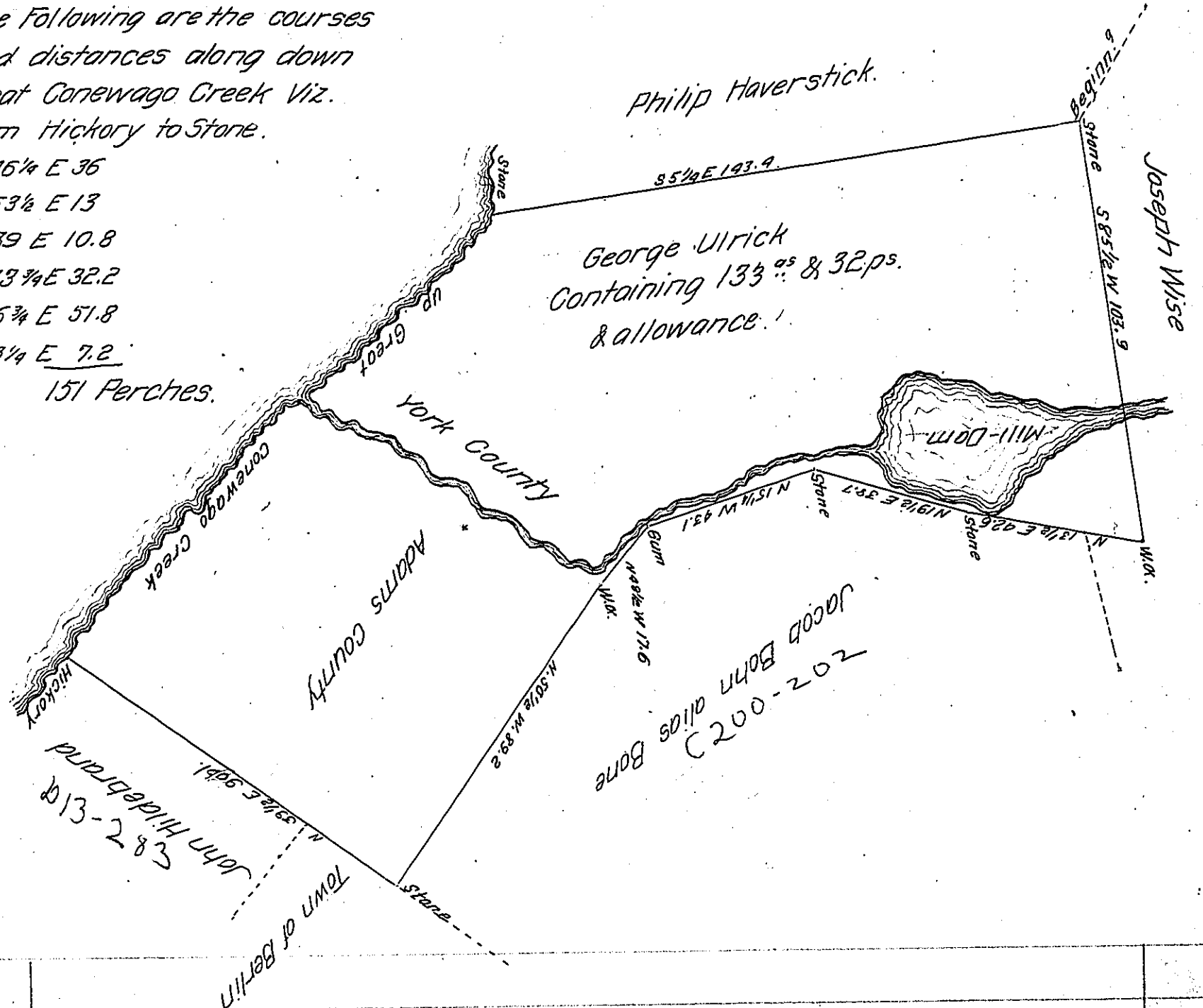


FORM No. 1.

The Following are the courses and distances along down great Conewago Creek Viz. from Hickory to Stone.

- S 45 1/4 E 36
- S 53 1/2 E 13
- S 39 E 10.8
- S 33 3/4 E 32.2
- S 36 3/4 E 51.8
- S 63 1/4 E 7.2

151 Perches.



Situate on Great Conewago, Formerly in the County of Lancaster, but now part in Berwick Township Adams County and part in Paradise Township York County. Containing as above set forth 133<sup>ac</sup> & 32 Perchs. & allow<sup>se</sup> Originally Surveyed on the 19<sup>th</sup> day of December 1741 by Zachariah Butcher D.S. In pursuance of a Warrant for 150<sup>ac</sup> Granted to George Ulrich, bearing date the 10<sup>th</sup> day of October 1738. Resurveyed nearly by the old lines. In pursuance of the aforesaid Warrant the 29<sup>th</sup> day of July Anno Domini 1809 for Abraham Swiggert the present owner who desired me to make Return of the Draught

To Andrew Porter Esq.  
 Surveyor General  
 Lancaster Pa.

Per  
 Jacob Spangler D.S.

IN TESTIMONY that the above is a copy of the original remaining on file in the Department of Internal Affairs of Pennsylvania, made conformably to an Act of Assembly approved the 16th day of February 1833, I have hereunto set my hand and caused the Seal of said Department to be affixed at Harrisburg, this Seventh day of March 1907

*Isaac D. Brown*  
 Secretary of Internal Affairs.